

# OSU Academy for Lifelong Learning

***If you believe that learning never ends,  
then you are invited to join ALL.***

## THE ACADEMY FOR LIFELONG LEARNING

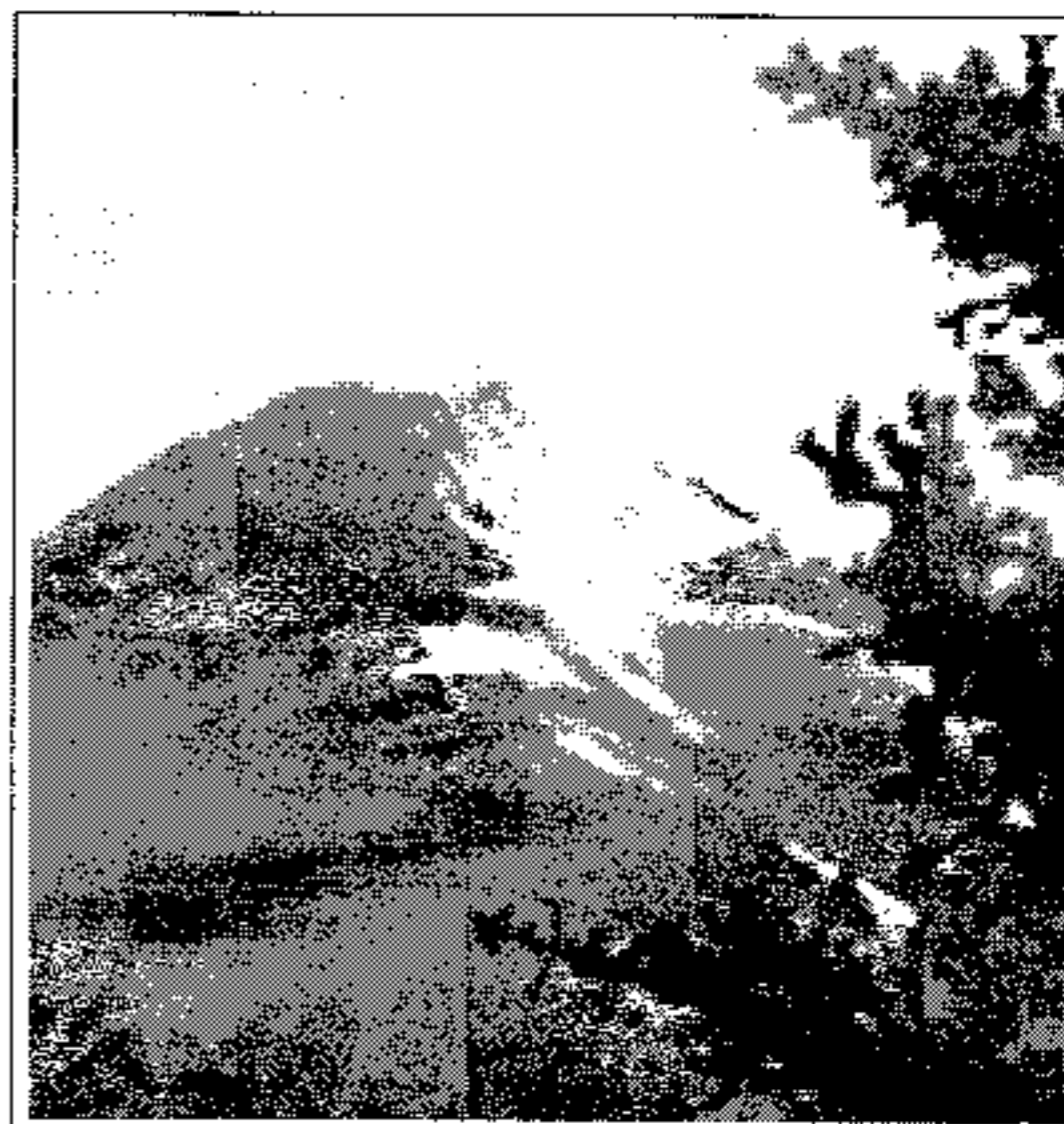
ALL is a self-funded, peer-led, membership organization, which embraces learning as a lifelong process. Members are both students and volunteer instructors, who bring to the group a wealth of ideas, knowledge, and diverse interest areas to share with peers. Much of ALL coursework is developed and led by fellow members. Classes boast active, participatory learning environments.

## MEMBERSHIP

ALL is open to any mature adult. You do **not** have to be an OSU alumnus or retiree. No particular experience or educational background is required. All you need is a genuine interest in lifelong learning!

## GOVERNANCE & AFFILIATIONS

ALL is self-governed and is administered by a volunteer Advisory Board. Current members are listed at the right. Within ALL, crucial committees are Curriculum, Membership and Publicity. ALL is self-supporting and is affiliated with the OSU Alumni Association. ALL coordinates activities with the Oregon State University Retirement Association (OSURA) Board and is recognized by the OSU Foundation and the OSU President's Office.



PAUL BARKLEY  
SHERYL BERNARD  
SUE BORDEN  
BARBARA CALLNER  
EMERY CASTLE  
CHARLES DALLMANN  
PAUL DICKEY  
ELDON ERICKSON  
JEAN PETERS  
NORM SEWARD  
LLOYD SWANSON  
CLIFF TROW  
CAROLINE WILKINS

**SOME CLASS SIZES ARE LIMITED SO SIGN UP EARLY!**

**WINTER 2004**  
CLASSES BEGIN JANUARY 6

## FREQUENTLY ASKED QUESTIONS

### WHERE WILL THE CLASSES BE HELD & WHAT ABOUT PARKING?

The majority of the classes are located at the OSU Foundation building on the corner of 35<sup>th</sup> and Western. There is free and ample parking there. Some classes are held at other locations. Class descriptions in the course information section indicate which classes will be held elsewhere.

For classes held on the OSU Campus, there are three parking options:

- 1) Use the free parking lot on the back (east) side of the new Hilton Garden Inn and walk to the class location. **NEW**
- 2) Park at the Foundation building, car-pooling to an on-campus parking lot where you can use the **Temporary Parking Permit** which ALL will provide. Car pools leave the parking lot 20 minutes before class. (Sign up using the Registration Form and include a D beside the box if you are willing to be a driver.) We plan for three people per car when ordering Temporary Parking Permits.
- 3) Pick up your own Temporary Parking Permit at the Parking Services Building on SW 15th Street. They are no longer free, but cost \$5 per day. **NEW**

### HOW DO I JOIN?

Membership in ALL is \$100 per year. New members can attend as few or as many classes as they wish for a full year beginning the quarter in which they join. (Additional fees are charged for a few classes to cover books, travel, class materials, etc.). Use the included registration form to indicate your selections so instructors can plan for handouts. Some class sizes are limited.

**Suggested registration deadline for Winter term is December 22nd. Registrations will be accepted after that date, but limited sized classes fill quickly. Join or register today!**

### HOW DO I CONTACT ALL?

**Address:** c/o OSU Alumni Association, 204 CH2M Hill Alumni Center, Corvallis, Oregon 97331-6303  
**Phone:** (541) 737-9405 – for messages, we will try to get back to you within 24 hours.  
**E-mail:** OSUALL@Yahoo.com  
**Web:** <http://oregonstate.edu/all/> (Includes the current course descriptions and Registration Form)

## QUARTERLY QUICK NOTES – WINTER 04

### 1. CLASS CANCELLATIONS AND SPECIAL CLASS FEES REFUNDS

We appreciate your letting us know when you **cannot** attend a class. If the class has limited capacity and people are on stand-by, your letting us know, via a call to our voicemail phone (737-9405), can make it possible to meet someone's request to attend the class. If you cannot attend a class for which you have paid a special fee, your prompt notification to us may result in the refund of your fee. For refunds, we will use the following **guidelines**:

A. If the class content changes, as happened with our Oregon Coast Fossils class this Fall, just let us know that you do not want to attend the substituted class and your special fee will be refunded. If there is no substituted class at all, the special fees for all the people who signed up will be refunded.

B. For other situations when you cannot attend a class or event such as a play or meal, please let us know seven (7) days or more in advance and your fee will be refunded. For our meals, the restaurant may order our special menu items a week in advance. This amount of notice will allow us to work with our Service Providers for the class and make arrangements to reduce the cost of the class or to notify others who might want to take your place.

C. If you miss a class at the "last minute" due to illness, or family needs prevent your attendance at a class, we will consider the situation, and do "what is right" in setting a precedent for the entire ALL membership.

**Continued on Page 8**

Morning classes will be held in the Community Room of the Majestic Theatre, 115 SW Second Street. Afternoon classes will be held at the OSU Foundation Board Room, 35th and Western.

### 1. Issues and Ideas – At the Majestic Theatre

#### **Tuesday, January 6, 9:30–11:30 AM: Mushrooming Around Town**

Nancy S. Weber, OSU Emeritus Librarian, uses invited and uninvited mushrooms and other fungi in and around Corvallis to illustrate the different roles of fungi in nature and in our lives.

#### **Tuesday, January 13, 9:30–11:30 AM: The U.S. and Its Place in the Middle East**

Aaron Wolf, OSU Associate Professor of Geography, looks at the evolution of the modern Middle East, both politically and from the perspective of U.S. interests, to form an opportunity for better understanding of the context of today's critical issues—Israel/Palestine, Iraq and al-Qaida. Interactive dialog with and among participants is expected.

#### **Tuesday, January 20, 9:30–11:30 AM: Rural Needs and Farm Subsidies**

Emery Castle, OSU Professor Emeritus of Agricultural and Resource Economics and President and senior fellow emeritus of Resources for the Future, draws a distinction between “rural economies” on the one hand and “agriculture” and “farm” on the other. Information will be provided to permit conclusions to be drawn as to whether existing farm programs address fundamental problems.

#### **Tuesday, January 27, 9:30–11:30 AM: Stability, Chaos, and Change: the Linking Thread**

John Byrne, OSU President Emeritus, shows how stability, chaos, and change are linked by a series of factors large and small using examples that come from personal experience, government and academics.

#### **Tuesday, February 3, 9:30–11:30 AM: Saving Ourselves and Our Planet – The Greening of Mental Health**

John Swanson, mental health professional, educator and pioneer in the field of ecopsychology, believes that incorporating an ecological perspective may become the greatest breakthrough in mental health since the advent of family therapy. John will provide an overview of the basic principles of ecopsychology that lead us to understand how our mental health and the health of our planet are inextricably linked.

#### **Tuesday, February 10, 9:30–11:30 AM: Globalization and Its Impact on the Northwest**

Bill Jaeger, OSU Associate Professor of Agricultural and Resource Economics, will discuss international trade from the perspective of an economist. He will highlight how trade has affected our economy and standard of living, point to some myths about globalization and the World Trade Organization, and provide some examples of how globalization has affected the Northwest.

#### **Tuesday, February 17, 9:30–11:30 AM: The Prescription Drug Problem – A Crisis in American Medicine**

Lee R. Strandberg, OSU Emeritus Professor of Pharmacy, Economics and Public Health, will focus on factors causing prescription and total medical spending in the U.S. to increase at rates greater than general inflation, and the issues surrounding the importation of prescription drugs from Canada. Some strategies to improve health outcomes and reduce the rate of spending on medical care will also be addressed.

#### **Tuesday, February 24, 9:30–11:30 AM: The State of Working Oregon**

Over the last decade Oregon has experienced boom, bust and an uncertain recovery. Jeff Thompson, Policy Analyst for the Oregon Center for Public Policy, explores what this means for Oregon workers and the economy.

#### **Tuesday, March 2, 9:30–11:30 AM: Asking the Right Questions About Taxation**

Tony VanVliet, former State Representative, District 35, looks at what taxes are supposed to do. Can a fair system be built and perceived by the public to the degree that changes will be made?

Morning classes will be held in the Community Room of the Majestic Theatre, 115 SW Second Street. Afternoon classes will be held at the OSU Foundation Board Room, 35th and Western.

**Tuesday, March 9, 9:30–11:30 AM: The Working Poor and Poverty in Oregon**

Cliff Trow, former State Senator and current Board Member of the Oregon Center for Public Policy, discusses the economic condition of the working poor in Oregon based on material presented by the Oregon Center for Public Policy.

**2. Exercise and Science – At the OSU Foundation**

**Tuesday, January 6, 1:30–3:30 PM:–Introduction to Tai Chi**

Meg Green, Corvallis Parks and Recreation Tai Chi instructor, will introduce us to Tai Chi, a system of physical exercises designed to enhance health and spiritual well being.

**Tuesday, January 13, 1:30–3:30 PM:–Introduction to Feldenkrais**

Caudine Kutsch introduces Feldenkrais, an alternative movement therapy that seeks to enhance cognitive and physical performance. By assessing neurological problems and developing sensory awareness of skeletal and neuromuscular biomechanics, Feldenkrais can produce pain relief, freedom of movement and the ability to realize human excellence.

**Tuesday, January 20, 1:30–3:30 PM:–Introduction to Pilates**

Antigone Cook from the OSU Health and Human Performance Department will introduce the Pilates method, a system which aims to develop the body's "center" in order to create a stable core for all types of movement. It is an all-encompassing mind, body and spirit exercise system. This whole approach to philosophy is often shared with other techniques such as yoga and Feldenkrais. There is a flexibility and strengthening aspect to each movement.

**Tuesday, January 27, 1:30–3:30 PM: Exercise Essentials for Older Adults**

Jason Wallis, owner of Fitness Over 50, discusses how our bodies have changed over the decades and how we need to rethink our exercise program to adapt to these changes.

**Tuesdays, February 3 and 10, 1:30–3:30 PM: Greek Origins of Western Thought in Art and Science, Parts I and II**

Retired OSU professor Brooks Spencer will discuss what occurred in the two centuries before Socrates that is sometimes referred to as "The Greek Miracle". In some ways, myth yielded to Logos as nature was studied and represented as natural rather than supernatural; comprehensible, rational, logical, and subject to investigation and discourse.

**Tuesday, February 17, 1:30–3:30 PM: What You Need to Know About Genetically–Modified Foods**

Alan Bakalinsky, Associate Professor OSU Department of Food Science and Technology, describes how genetically modified foods came to be and will explore current controversies. While increasingly commonplace, genetically modified foods are not universally accepted. Public mistrust of gene-splicing technology has sparked ballot measures for mandatory labeling in certain states and great resistance to their introduction into the European Union.

**Tuesday, February 24, 1:30–3:30 PM: Genomes for All**

James C. Carrington from the Center for Gene Research and Biotechnology, will focus on recent advances in genome-based biology and what it means for all of us. New technologies and discoveries are rapidly advancing the frontiers of knowledge about genomes and their function. This process has important practical implications for health, agriculture and the environment.

**Tuesday, March 2, 1:30–3:30 PM: Nuclear Applications in Space**

NASA has identified nuclear technology as important for future space exploration. Dr. Andrew C. Kline, Professor and Head of the OSU's Nuclear Engineering and Radiation Health Physics Department, will discuss historical as well as future applications of nuclear technology.

**Morning classes will be held in the Community Room of the Majestic Theatre, 115 SW Second Street. Afternoon classes will be held at the OSU Foundation Board Room, 35th and Western.**

**Tuesday, March 9, 1:30–3:30 PM: A Look Back at Weather Events in the History of the Northwest, and a Look Ahead to the Future**

George Taylor is the State Climatologist for Oregon and a member of OSU's College of Oceanic and Atmospheric Sciences. He also serves as "weather historian" for the state through his analysis of past storm events. He has written two books on Oregon weather and climate and will share his points of view on climate trends over the last century and predictions about what we can expect for the future.

### **3. History, Politics and Philosophy – At the OSU Foundation**

**Wednesday, January 7, 1:30–3:30 PM: Not In Their Own Voices – Local African American Pioneers**

Judy Rycraft Juntunen, retired research librarian for the Benton County Historical Museum, says that Oregon has been described as a tough spot with a nice climate for African Americans to live. Their early history is seldom recorded in their own voice, instead it is told in the words of others through personal reminiscences of white neighbors and friends, census records, and other legal documents. Learn more about these early pioneers and the challenges they faced.

**Wednesday, January 14, 21, and 28, 1:30–3:30 PM: How to Live Peacefully in a Violent World**

For three sessions Ursula Tabor, Nurse/Psychotherapist (Ret.), Doctor of Ministry, will address the mysterious attraction of Evil in our world, as well as ways of protecting ourselves from succumbing to fear and becoming mired in despair. We will explore obstacles to peace and ways of becoming peacemakers. Another focus will be on select individuals (models of peace) who, in our collective memory, have become heroes and saints in the midst of horror and shining beacons in a darkened world.

**Wednesday, February 4, 1:30–3:30 PM: Lincoln vs. Davis – Civil War Leadership**

Cliff Trow, OSU History Professor Emeritus and former State Senator, presents a comparison of beliefs and actions of two presidents (Abraham Lincoln and Jefferson Davis) engaged in Civil War conflict.

**Wednesday, February 11 and 18, 1:30–3:30 PM: Learning, Memory and the Role of the Brain**

Gina Vee, retired Psychology and Gerontology Instructor at Linn-Benton Community College, will explore the anatomy and psychology of the brain, how memory works and brain changes over the lifespan and its influences on learning.

**Wednesday, February 25, 1:30–3:30 PM: Teddy Roosevelt – How Progressive?**

Professor Trow gives an assessment of the 'Rough Rider' as president.

**Wednesday, March 3, 1:30–3:30 PM: Street Law**

Steve Anderson, attorney and adjunct faculty at Western Oregon University, will share a case study to address legal issues and highlight the inter-relationship of morality and the law in our legal system.

**Wednesday, March 10, 1:30–3:30 PM: Siuslaw National Forest – Restoration and Recovery**

Mary Zuschlag, Siuslaw, National Forest Natural Resource Staff Officer, reflects on decades-long restoration efforts within the Coast Range and their effects on salmon recovery, community economics and partnerships. She will share three projects that are currently making a difference.

### **4. Greece, Turkey and Fine Arts – At the Majestic Theatre**

The Greece and the Fine Arts programs are interconnected and so we have listed them together. We also call your attention to **Greek Origins of Western Thought in Art and Science, Parts I and II** on Tuesday, February 3 and 10, 1:30–3:30 PM

**Thursday, January 8, 9:30–11:30 AM: Putting the Community in Community Theater**

John Baur, Albany Community Theater Board president, director, and actor, will talk about how an all-volunteer

**Morning classes will be held in the Community Room of the Majestic Theatre, 115 SW Second Street. Afternoon classes will be held at the OSU Foundation Board Room, 35th and Western.**

group operates, maintains its own facilities, manages a year-round season, and coordinates the activities of hundreds of enthusiastic volunteers. He'll also discuss acting, auditions, upcoming shows, and planning the years ahead.

**Thursday, January 15, 9:30–11:30 AM: Bless Our Yearly Festival**

The first Golden Age of Theatre was in Fifth Century BC Greece. Dr. Robert Leff will present an overview of classical Greek Theatre, which was both a religious and civic ritual in honor of the god Dionysus. Unlike contemporary theatre, plays in ancient Greece were performed only a few times during the year. OSU graduate Robert Leff has a PhD in Theatre from Kansas University.

**Thursday, January 22, 9:30–11:30 AM: From Oedipus Rex to Darth Vader and Beyond**

The Golden Age of Greek Theatre lasted for 100 years, but it has influenced artists in many fields over the centuries. Robert Leff will present examples from the worlds of theatre, opera, ballet, modern dance, film, and American musical comedy.

**Thursday, January 29, 9:30–11:30 AM: Athens and Sparta in the Fifth Century BC**

Gary Ferngren, OSU Professor of History, will examine the political and cultural history of Athens and Sparta, the two leading Greek states during the classical period. During his 33 years of teaching, Dr. Ferngren has written extensively on the social history of medicine in the ancient world and on the historical relationship of science and religion.

**Thursday, February 5, 9:30–11:30 AM: A Visit to a Greek Island**

Come along with Anita Sullivan for a virtual tour of the island of Ikaria in the Aegean Sea, not far from Turkey. Hear the traditional island music and learn about the way of life in this once fully independent nation (for 5 months). Sullivan has visited the island many times, has written a book about it, and would like share some of its secrets. Anita Sullivan tuned pianos in Corvallis for 20 years, and has published two books about the philosophy and art of piano tuning. She was a commentator for 11 years on National Public Radio's "Performance Today."

**Thursday, February 12, 9:30–11:30 AM: The Beauty that is Photography**

Harrison Branch, OSU Professor of Photography in the Art Department, will offer a lecture/slide presentation on photography, looking at the work of various 20th century artists in the medium, such as Weston, Evans, and Callihan.

**Wednesday, February 18, 9:30–11:30 AM: Garlic, Lemon and Olive Oil: Greek Food and Culture**

Susan and Nick Pisas will share the significance of Greek food and culture from a Greek/American perspective, including samples of food. Bring along your taste buds. Raised in San Francisco, Nick is a second generation Greek. His mother and grandmother, notably excellent cooks, prepared traditional dishes for family gatherings. His family was a smaller version of the one seen in "My Big Fat Greek Wedding"! Susan married into the Greek/American culture and has been able to write recipes for family dishes that previously had been in Yaya's and Great Yaya's memory recipe files.

**Thursday, February 19, 9:30–11:30 AM: Turkish Culture through the Ages**

Ayca Tekin-Koru, OSU Economics Professor, was born and raised in the Black Sea Region of Turkey and will introduce us to Turkish culture. Her topics will include: Mevlana, Nasreddin Hoca, Ottoman and Istanbul architecture, daily life in the Ottoman Palace and the Harem, artistic transformation during the reign of Suleyman the Magnificent, music and the Janissary band during Ottoman times, Mimar Sinan and his work, ornamental tombstones, art and the Tulip Era, decorative ceramic tiles, calligraphy, rugs and kilims, and traditional Turkish plays. She will close with a discussion of the Republican period and Ataturk's Revolution.

**Friday, February 20 – Greek Luncheon**

At press time the details were not complete for our Greek luncheon at George Ldaghli's restaurant in Salem. Indicate your interest in attending on the registration form. We will have a separate registration form with the menu and all the details in January.

Morning classes will be held in the Community Room of the Majestic Theatre, 115 SW Second Street. Afternoon classes will be held at the OSU Foundation Board Room, 35th and Western.

**Wednesday, February 25, 9:30–11:30 AM: The Villages of Greece**

George Constantine, OSU Professor Emeritus of Pharmacy, will discuss the villages of Greece. Although Greece has its share of large cities, the majority of the population lives in remote villages where they maintain what appears to be a reclusive lifestyle. Entrapped between the rich ancient history, the destructive powers of war and occupation, the village tradition can be still found in each of us. The son of an immigrant Greek father and a Greek mother, Professor Constantine was born in California and raised in North Dakota.

**Thursday, February 26, 9:30–11:15 AM: Discussion of Handel's *The Messiah***

Dr. Steven M. Zielke, Director of Choral Studies at Oregon State University, directs the OSU Chamber Choir and the OSU Meistersingers. He earned his doctoral and master's degrees in choral conducting from The Florida State University and joined the OSU Music Department in 1999. He returns to ALL to share his thoughts on Handel's *Messiah*.

**Thursday, March 4, 9:30–11:30 AM: The Music of Charles Ives**

David Eiseman, OSU Professor Emeritus of Musicology, will survey the unique and compelling music of Charles Ives (1874-1954), America's seminal maverick composer. The son of the Civil War's youngest bandmaster, his music, whether nostalgic or boisterous, embodies strands of Americana, including the parlor, the popular, the patriotic, the political, the religious and the philosophic, cast in an array of unprecedented startling innovations.

**Thursday, March 4, 7:30 PM: G. F. Handel's *The Messiah***

The combined choirs, soloists, and the Corvallis-OSU Symphony join together for this timeless classic. *Please purchase your own tickets from the OSU Music Department or Gracewinds Music. Cost \$15*

**Thursday, March 11, 9:30–11:30 AM: Director's Discussion of *Proof* and a Backstage Tour of the Majestic Theatre.**

Mike Aronson appeared in *A Funny Thing Happened on the Way to the Forum*, *Mousetrap*, *Isn't it Romantic*, *Anything Goes*, and *The Happy Time* for Corvallis Community Theatre. He directed *Sylvia*, *Amateurs*, *Old Wicked Songs*, *Over the River and Through the Woods*, *Only in America* and *Visiting Mr. Green* for CCT. Mike's day job is managing software at Lucidyne Technologies. This talented actor/director will share his thoughts about directing the play *Proof*. Phil McBeth, Technical Director for the Majestic Theatre, will conduct a behind-the-scene tour of the Majestic Theatre.

**Sunday, March 14, 2:30 PM: *Proof* by David Auburn**

The death of a famous mathematician leads to the discovery in his house of a hidden notebook containing proof of a theorem that eluded scholars for hundreds of years. His daughter, Catherine, holds the secret to the authorship of the proof but her explanation results in stubborn disbelief from her lover, one of her father's proteges, and her older sister. They are worried that Catherine has inherited her father's instability as well as his brilliance. Catherine's real discovery is finding that "trust needs no proof" is the essential element of love. *Proof* won the Pulitzer Prize, the Drama Desk Award, and the Tony Award for best Play of 2001. Join us for this matinee performance at the Majestic Theatre. Cost \$8.

**Thursdays, January 8 – February 26, 1:30–3:30 Homer's *Odyssey*, the Journey Home, Then and Now**

Roger Weaver, OSU Professor Emeritus of English, taught poetry writing, literatures of minorities, and classics of world literature. Recent author of his fourth book of poetry, *Reading the Stones; New and Selected Poems*, 2003, he has also just finished his handbook for poets *Standing on Earth, Throwing These Sequins at the Stars*. He owned a house on Paros for eleven years and will lead an ALL/Elderhostel trip to Greece and Turkey in spring 2004 called "On the Trail of Odysseus."

From the very first words, a major shift in consciousness and relationship to the gods is expressed by the mature Homer. We share our separate experiences of Homer's words. Just as individuals figure more heavily than they do in *The Iliad*, where they belonged to a group (an army of men), we also see the women of the *Odyssey* are more fully rounded in their characterization. The course is taught from the bias that the epic poem was a product of a single imagination, with alternative myths about some of the characters providing possibilities of

Morning classes will be held in the Community Room of the Majestic Theatre, 115 SW Second Street. Afternoon classes will be held at the OSU Foundation Board Room, 35th and Western.

complicated motivations. Many flashbacks are used in unfolding Odysseus's adventures in the years following the start of his homeward journey. The story begins with Odysseus embarking on what he thinks is the final leg of that journey.

Text for the class is *The Odyssey*, by Homer, translated by Robert Fagles, 1996 Penquin paper back, ISBN # 0-14-026886-3, cost \$14.95. Students should obtain their copies in advance of the class. Each session will cover three books-chapters of the *Odyssey* which participants should read in advance of each class. This class is a full eight week commitment.

Thursday, January 8, 1:30-3:00PM: Books 1-3  
Thursday, January 15, 1:30-3:00PM: Books 4-6  
Thursday, January 22, 1:30-3:00PM: Books 7-9  
Thursday, January 29, 1:30-3:00PM: Books 10-12  
Thursday, February 5, 1:30-3:00PM: Books 13-15  
Thursday, February 12, 1:30-3:00PM: Books 16-18  
Thursday, February 19, 1:30-3:00PM: Books 19-21  
Thursday, February 26, 1:30-3:00PM: Books 22-24

## QUARTERLY QUICK NOTES – Continued from Page 2

### 2. MEMBER PRESENTATIONS

Several of our members who have not made presentations before have volunteered to lead classes in their own areas of expertise and/or interest. This is wonderful and how our organization is supposed to work. I want to encourage every ALL member to consider doing this. You may feel that you can offer is of no interest to the rest of us. You may be pleasantly surprised to find out that we do want to know more of what you can and would love to share with us. Please think about it and let Dorothy Brown, our Curriculum Committee Chair, know what presentation you want to make.

### 3. WANTED – BOARD AND COMMITTEE MEMBERS

Our Curriculum Committee works very hard for several months before each quarter to develop the curriculum and find people to lead the classes we all enjoy. They are always looking for new members to help them (and give them a bit of respite!) It is a task that any ALL member can do. It requires no special background or training, just a desire to have a little fun and develop an exciting list of classes for the membership. We need to form a Membership Committee to keep us growing and to provide member support such as the weekly classes reminders. Our Marketing and Publicity Committee is also looking for members to help spread the word. Our Board of Directors has some turnover due to changing family and personal situations. In other words, this is to remind you that we are "A Peer Led, Membership Organization" which means that each of us has a part we can play to make ALL stronger and meet the needs and desires of our members better. Please consider volunteering in some capacity. It is not necessary to attend every meeting. It is OKAY to have a life outside ALL. We all contribute what we can, when we can.

4. Consider joining the ALL/Elderhostel tour of Greece and Turkey in April 2004. This 16 day tour will follow part of Homer's Odyssey, beginning in Athens and ending in Istanbul. We have received deposits booking 19 of the 30 possible reservations. If you would like additional information regarding this adventure, please let us know.

**"Select All You Want, but Be Sure to Attend All You Select."**

Please **ONLY ONE** registration per form. Make a copy of your selections and mail by December 22.

Mr.  Mrs.  Ms. Name: \_\_\_\_\_

Address: \_\_\_\_\_

City: \_\_\_\_\_ State: \_\_\_\_\_ Zip: \_\_\_\_\_

Phone: \_\_\_\_\_

E-Mail: \_\_\_\_\_

Annual membership per year in the OSU Academy for Lifelong Learning is \$100, good for 12 months, i.e. Winter 2004 quarter through December 2004. New memberships can start in any quarter.

New/renewal membership fee: \$100 per person \_\_\_\_\_ Optional: Program donations \_\_\_\_\_

Special Class fees: Greek Luncheon (Price TBA) \_\_\_\_\_ Scholarships \_\_\_\_\_

Proof Ticket (\$8) \_\_\_\_\_

Total Enclosed \_\_\_\_\_

## MAKE CHECKS PAYABLE TO: ALL/OSUAA

Mail or bring your check & this registration form to:

The Academy for Lifelong Learning  
c/o OSU Alumni Association  
204 CH2M Hill Alumni Center  
Corvallis, OR 97331-6303

The continuing success and expansion of ALL depends on meeting your needs and bringing in new members. Please list below people you feel will enjoy ALL.

Name	Street Address	City	ZIP
_____	_____	_____	_____
_____	_____	_____	_____
_____	_____	_____	_____

## HOW DO I VOLUNTEER TO LEAD A CLASS, BE A COMMITTEE MEMBER OR JUST HELP OUT?

Because ALL is member-run, we need dedicated volunteers and class leaders. Please share your talents! Just indicate below what you would like to do and how to contact you. Thanks!

Your Name \_\_\_\_\_ Phone/E-Mail \_\_\_\_\_

Area(s) of Interest \_\_\_\_\_

Is there anything else you would like to tell us? All comments are welcome!

\_\_\_\_\_  
\_\_\_\_\_

**“Select All You Want, but Be Sure to Attend All You Select.”**

Please check the boxes for the classes or events you want to attend. If there is an additional charge, mark it on the front registration page and include a check for the total amount.

**1. Issues and Ideas**

- Tuesday, Jan. 6, 9:30–11:30 AM: Mushrooming Around Town
- Tuesday, Jan. 13, 9:30–11:30 AM: The U.S. & the Middle East
- Tuesday, Jan. 20, 9:30–11:30 AM: Rural Needs & Farm Subsidies
- Tuesday, Jan. 27, 9:30–11:30 AM: Stability, Chaos, & Change
- Tuesday, Feb. 3, 9:30–11:30 AM: Saving Ourselves & Our Planet
- Tuesday, Feb. 10, 9:30–11:30 AM: Globalization & the Northwest
- Tuesday, Feb. 17, 9:30–11:30 AM: Prescription Drugs
- Tuesday, Feb. 24, 9:30–11:30 AM: Working Oregon
- Tuesday, March 2, 9:30–11:30 AM: Questions about Taxation
- Tuesday, March 9, 9:30–11:30 AM: Working Poor in Oregon

**2. Exercise and Science**

- Tuesday, Jan. 6, 1:30–3:30 PM: Tai Chi
- Tuesday, Jan. 13, 1:30–3:30 PM: Feldenkrais
- Tuesday, Jan. 20, 1:30–3:30 PM: Pilates
- Tuesday, Jan. 27, 1:30–3:30 PM: Exercise for Older Adults
- Tuesdays, Feb. 3 and 10, 1:30–3:30 PM: Greek Origins of Western Thought in Art & Science
- Tuesday, Feb. 17, 1:30–3:30 PM: Genetically-Modified Foods
- Tuesday, Feb. 24, 1:30–3:30 PM: Genomes for All
- Tuesday, March 2, 1:30–3:30 PM: Nuclear Applications in Space
- Tuesday, March 9, 1:30–3:30 PM: Northwest Weather

**3. History, Politics and Philosophy**

- Wednesday, Jan. 7, 1:30–3:30 PM: Local African American Pioneers
- Wednesday, Jan. 14, 21, & 28, 1:30–3:30 PM: Living in a Violent World
- Wednesday, Feb. 4, 1:30–3:30 PM: Lincoln vs. Davis
- Wednesday, Feb. 11 & 18, 1:30–3:30 PM: Role of the Brain
- Wednesday, Feb. 25, 1:30–3:30 PM: Teddy Roosevelt
- Wednesday, March 3, 1:30–3:30 PM: Street Law
- Wednesday, March 10, 1:30–3:30 PM: Siuslaw National Forest

**4. Greece, Turkey and Fine Arts**

- Thursday, Jan. 8, 9:30–11:30 AM: Community Theater
- Thursday, Jan. 15, 9:30–11:30 AM: Our Yearly Festival
- Thursday, Jan. 22, 9:30–11:30 AM: Greek Influences Today
- Thursday, Jan. 29, 9:30–11:30 AM: Athens & Sparta
- Thursday, Feb. 5, 9:30–11:30 AM: Visit a Greek island
- Thursday, Feb. 12, 9:30–11:30 AM: Photography
- Wednesday, Feb. 18, 9:30–11:30 AM: Greek Food & Culture
- Thursday, Feb. 19, 9:30–11:30 AM: Turkish Culture
- Friday, Feb. 20 – Greek Luncheon in Salem
- Wednesday, Feb. 25, 9:30–11:30 AM: Villages of Greece
- Thursday, Feb. 26, 9:30–11:15 AM: Handel's *Messiah*
- Thursday, March 4, 9:30–11:30 AM: Charles Ives
- Thursday, March 11, 9:30–11:30 AM: *Proof & Stage* Tour
- Sunday, March 14, 2:30 PM: *Proof* Performance
- Thursdays, Jan. 8 – Feb. 26, 1:30–3:30 Homer's *Odyssey*

What classes would you like for ALL to consider? If you can recommend an instructor, please include the appropriate contact information:

Class Name/Description \_\_\_\_\_  
 \_\_\_\_\_  
 \_\_\_\_\_

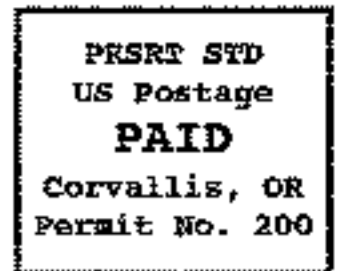
Presenter Name & Contact Information \_\_\_\_\_  
 \_\_\_\_\_  
 \_\_\_\_\_

Morning classes are held at the Majestic Theatre, afternoon classes are at the OSU Foundation Building.

MONDAY	TUESDAY	WEDNESDAY	THURSDAY	FRIDAY
January 5	January 6 Mushrooming Around Town 9:30-11:30 Tai Chi 1:30-3:30	January 7  Local African American Pioneers 1:30-3:30	January 8  Community Theatre 9:30-11:30 Homer's <i>Odyssey</i> 1:30-3:30	January 9
January 12	January 13 USA & Middle East 9:30-11:30 Feldenkrais 1:30-3:30	January 14  Living in a Violent World 1:30-3:30	January 15  Our Yearly Festival 9:30-11:30 Homer's <i>Odyssey</i> 1:30-3:30	January 16
January 19	January 20 Rural Needs 9:30-11:30 Pilates 1:30-3:30	January 21  Living in a Violent World 1:30-3:30	January 22  Greek Influences Today 9:30-11:30 Homer's <i>Odyssey</i> 1:30-3:30	January 23
January 26	January 27 Stability & Change 9:30-11:30 Older Adult Exercise 1:30-3:30	January 28  Living in a Violent World 1:30-3:30	January 29  Athens & Sparta 9:30-11:30 Homer's <i>Odyssey</i> 1:30-3:30	January 30
February 2	February 3 Saving Ourselves 9:30-11:30 Greek Thought I 1:30-3:30	February 4  Lincoln vs. Davis 1:30-3:30	February 5  Visit a Greek Island 9:30-11:30 Homer's <i>Odyssey</i> 1:30-3:30	February 6
February 9	February 10 Globalization & NW 9:30-11:30 Greek Thought II 1:30-3:30	February 11  Role of the Brain 1:30-3:30	February 12  Photography 9:30-11:30 Homer's <i>Odyssey</i> 1:30-3:30	February 13
February 16	February 17 Prescription Drugs 9:30-11:30 Modified Foods 1:30-3:30	February 18 Greek Food & Culture 9:30-11:30 Role of the Brain 1:30-3:30	February 19 Turkish Culture 9:30-11:30 Homer's <i>Odyssey</i> 1:30-3:30	February 20  Greek Luncheon
February 23	February 24 Working Oregon 9:30-11:30 Genomes for All 1:30-3:30	February 25 Villages of Greece 9:30-11:30 Teddy Roosevelt 1:30-3:30	February 26  <i>Messiah</i> Talk 9:30-11:30 Homer's <i>Odyssey</i> 1:30-3:30	February 27
March 1	March 2 Taxation Questions 9:30-11:30 Nuclear Applications 1:30-3:30	March 3  Street Law 1:30-3:30	March 4  Charles Ives 9:30-11:30 <i>Messiah</i> Performance 7:30 PM	March 5
March 8	March 9 Working Poor 9:30-11:30 NW Weather 1:30-3:30	March 10  Siuslaw National Forest 1:30-3:30	March 11  <i>Proof</i> Talk & Backstage Tour 9:30-11:30	March 12  Sunday, March 14 Group Viewing of <i>Proof</i> 2:30 PM

**OSU Academy  
for Lifelong Learning**

Oregon State University  
c/o OSU Alumni Association  
204 CH2M Hill Alumni Center  
Corvallis, Oregon 97331-6303



---

**OREGON STATE**  
U n i v e r s i t y

**OSU Academy  
for Lifelong Learning**

***If you believe that learning never ends,  
then you are invited to join ALL.***



---

**WINTER 2004**  
**CLASSES BEGIN JANUARY 6**

**<http://oregonstate.edu/all/>**

---